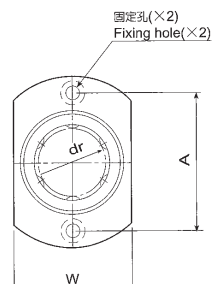
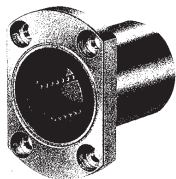
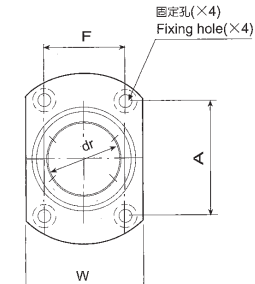
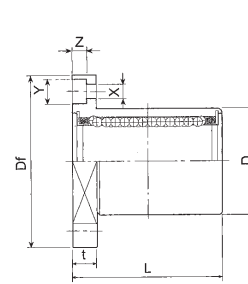


LMH 切兩側凸緣型 (公制規格)

Two Side Cut Flange Type (Metric Dimension)



LMH 13 或較小
LMH 13 or less



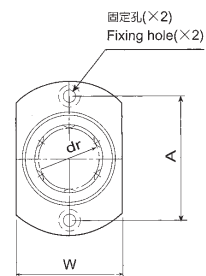
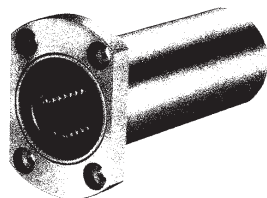
LMH 16 或較大
LMH 16 or more

軸徑 Nominal shaft diameter mm	型號 Model No.	主要尺寸及精度 Main dimensions and tolerance					
		mm	dr		D		L
			Tolerance 公差 μm	mm	Tolerance 公差 μm	mm	
6	LMH 6UU	6	0	12	0	19	-200
8	LMH 8UU	8		15	-9	24	
10	LMH 10UU	10		19	-13	29	
12	LMH 12UU	12	21	0		30	
13	LMH 13UU	13	23	32		-200	
16	LMH 16UU	16	28	37			
20	LMH 20UU	20	32	42	0		
25	LMH 25UU	25	40	59			
30	LMH 30UU	30	45	64		-300	

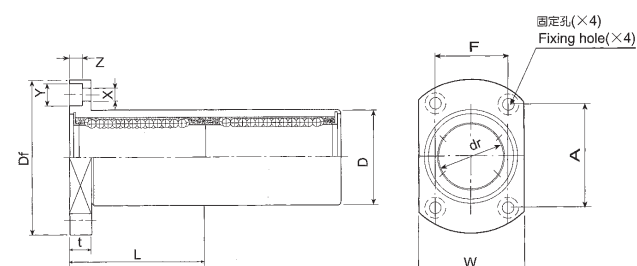
主要尺寸及精度 Main dimensions and tolerance								偏心 Eccentricity μm	直角度 Squareness μm	基本定格荷重 Basic load rating		重量 Weight g	軸徑 Nominal shaft diameter mm
凸緣 Flange										動態 dynamic C(kgf)	靜態 static Co(kgf)		
Df mm	W mm	t mm	A mm	F mm	X mm	Y mm	Z mm						
28	18	5	20	—	3.5	6	3.1	12	12	21	27	21	6
32	21	5	24	—	3.5	6	3.1			28	40	33	8
40	25	6	29	—	4.5	7.5	4.1			38	56	64	10
42	27	6	32	—	4.5	7.5	4.1			52	80	68	12
43	29	6	33	—	4.5	7.5	4.1			52	80	81	13
48	34	6	31	22	4.5	7.5	4.1			79	120	112	16
54	38	8	36	24	5.5	9	5.1	15	15	90	140	167	20
62	46	8	40	32	5.5	9	5.1			100	160	325	25
74	51	10	49	35	6.6	11	6.1			160	279	388	30

LMH...L 切兩側加長凸緣型(公制規格)

Two Side Cut Flange Double Type (Metric Dimension)



LMH 13L 或較小
LMH 13L or less

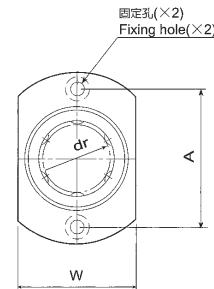
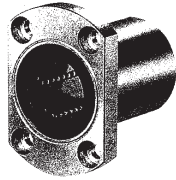


LMH 16L 或較大
LMH 16L or more

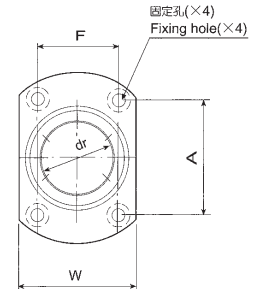
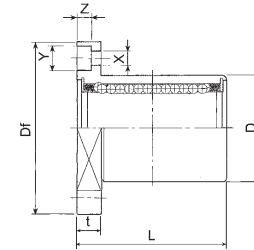
軸徑 Nominal shaft diameter mm	型號 Model No.	主要尺寸及精度 Main dimensions and tolerance						
		dr		D		L		
		mm	Tolerance 公差 μm	mm	Tolerance 公差 μm	mm	Tolerance 公差 μm	
6	LMH 6LUU	6	0	12	0	35	0	
8	LMH 8LUU	8		15	-13	45		-200
10	LMH 10LUU	10		19	-16	55		
12	LMH 12LUU	12		21		0	57	0
13	LMH 13LUU	13		23		61	-300	
16	LMH 16LUU	16		28		70		
20	LMH 20LUU	20		32		0	80	
25	LMH 25LUU	25		40		-19	112	
30	LMH 30LUU	30		45		123	-400	

主要尺寸及精度 Main dimensions and tolerance								偏心 Eccentricity μm	圓角度 Squareness μm	基本定格荷重 Basic load rating		重量 Weight g	軸徑 Nominal shaft diameter mm
凸緣 Flange										動定格 dynamic C(kgf)	靜定格 static Co(kgf)		
Df mm	W mm	t mm	A mm	F mm	X mm	Y mm	Z mm						
28	18	5	20	—	3.5	6	3.1	15	15	33	54	28	6
32	21	5	24	—	3.5	6	3.1			44	80	47	8
40	25	6	29	—	4.5	7.5	4.1			60	112	90	10
42	27	6	32	—	4.5	7.5	4.1			83	160	102	12
43	29	6	33	—	4.5	7.5	4.1			83	160	123	13
48	34	6	31	22	4.5	7.5	4.1			125	240	182	16
54	38	8	36	24	5.5	9	5.1			20	20	143	279
62	46	8	40	32	5.5	9	5.1	159	320			525	25
74	51	10	49	35	6.6	11	6.1	254	560			645	30

LMH-N 切兩側凸緣防銹型 (公制規格, 無電解鍍處理)
 Two Side Cut Flange Type
 (Metric Dimension, Electroless Nickel Plating)



LMH 13-N 或較小
LMH 13-N or less



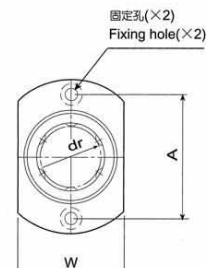
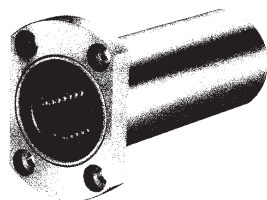
LMH 16-N 或較大
LMH 16-N or more

軸徑 Nominal shaft diameter mm	型號 Model No.	主要尺寸及精度 Main dimensions and tolerance					
		dr		D		L	
		mm	Tolerance 公差 μm	mm	Tolerance 公差 μm	mm	Tolerance 公差 μm
6	LMH 6UU-N	6	0	12	0	19	0
8	LMH 8UU-N	8		15	-9	24	
10	LMH 10UU-N	10		19	-13	29	0
12	LMH 12UU-N	12		21		0	
13	LMH 13UU-N	13	23	32		-200	
16	LMH 16UU-N	16	28	37			
20	LMH 20UU-N	20	0	32	0	42	0
25	LMH 25UU-N	25	-10	40	-16	59	
30	LMH 30UU-N	30		45		64	

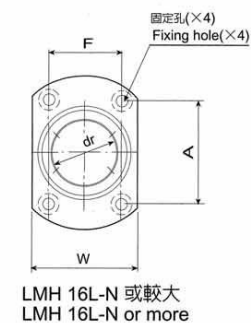
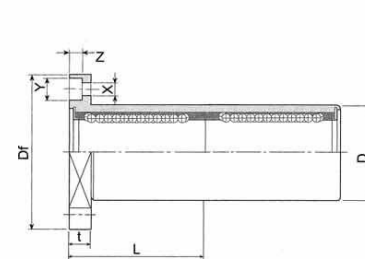
主要尺寸及精度 Main dimensions and tolerance								偏心 Eccentricity μm	直角度 Squareness μm	基本定格荷重 Basic load rating		重量 Weight g	軸徑 Nominal shaft diameter mm
凸緣 Flange										動定格 dynamic C(kgf)	靜定格 static Co(kgf)		
Df mm	W mm	t mm	A mm	F mm	X mm	Y mm	Z mm						
28	18	5	20	—	3.5	6	3.1	12	12	21	27	21	6
32	21	5	24	—	3.5	6	3.1			28	40	33	
40	25	6	29	—	4.5	7.5	4.1			38	56	64	10
42	27	6	32	—	4.5	7.5	4.1			52	80	68	
43	29	6	33	—	4.5	7.5	4.1			52	80	81	13
48	34	6	31	22	4.5	7.5	4.1			79	120	112	
54	38	8	36	24	5.5	9	5.1	90	140	167	20		
62	46	8	40	32	5.5	9	5.1	15	15	100		160	325
74	51	10	49	35	6.6	11	6.1			160	279	388	30

LMH...L-N 切兩側加長凸緣防銹型(公制規格, 無電解鍍處理)

Two Side Cut Flange Double Type
(Metric Dimension, Electroless Nickel Plating)



LMH 13L-N 或較小
LMH 13L-N or less



LMH 16L-N 或較大
LMH 16L-N or more

軸徑 Nominal shaft diameter mm	型號 Model No.	主要尺寸及精度 Main dimensions and tolerance					
		dr		D		L	
		mm	Tolerance 公差 μm	mm	Tolerance 公差 μm	mm	Tolerance 公差 μm
6	LMH 6LUU-N	6	0	12	0	35	0
8	LMH 8LUU-N	8		15	-13	45	-200
10	LMH 10LUU-N	10		19	0	55	-300
12	LMH 12LUU-N	12		21		57	
13	LMH 13LUU-N	13	-10	23	-16	61	0
16	LMH 16LUU-N	16	-12	28	-19	70	-300
20	LMH 20LUU-N	20		32		80	0
25	LMH 25LUU-N	25		40		112	
30	LMH 30LUU-N	30		45		123	

主要尺寸及精度 Main dimensions and tolerance								偏心 Eccentricity μm	直角度 Squareness μm	基本定格荷重 Basic load rating		重量 Weight g	軸徑 Nominal shaft diameter mm
凸緣 Flange										動定格 dynamic C(kgf)	靜定格 static Co(kgf)		
Df mm	W mm	t mm	A mm	F mm	X mm	Y mm	Z mm						
28	18	5	20	—	3.5	6	3.1	15	15	33	54	28	6
32	21	5	24	—	3.5	6	3.1			44	80	47	8
40	25	6	29	—	4.5	7.5	4.1			60	112	90	10
42	27	6	32	—	4.5	7.5	4.1			83	160	102	12
43	29	6	33	—	4.5	7.5	4.1			83	160	123	13
48	34	6	31	22	4.5	7.5	4.1			125	240	182	16
54	38	8	36	24	5.5	9	5.1	20	20	143	279	247	20
62	46	8	40	32	5.5	9	5.1			159	320	525	25
74	51	10	49	35	6.6	11	6.1			254	560	645	30